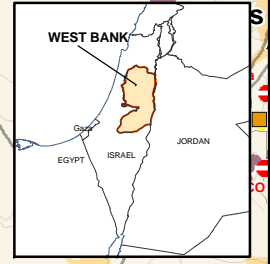


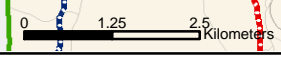
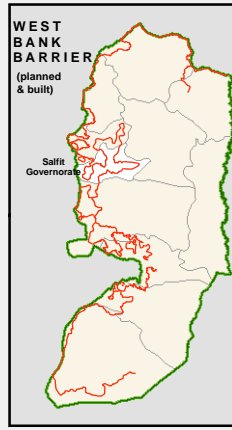
UN Office for the Coordination of Humanitarian Affairs
West Bank Closures - Salfit
 March 2004



SALFIT CLOSURES
 March Summary

Checkpoint	1
Partial Checkpoint	13
Roadblock	1
Road Gate	1
Earth Mound	12
Earth Wall	0
Trench	3
Observation Tower	2
TOTAL	33

The designations employed and the presentation of material on this map do not imply the expression of any opinion whatsoever on the part of the Secretariat of the United Nations concerning the legal status of any country, territory, city or area or of its authorities, or concerning the delimitation of its frontiers or boundaries.



CLOSURES

- Observation Tower
- Road Gate
- Roadblock
- Earth Mound
- Earth Wall
- Trench
- Permanent Checkpoint
- Partial Checkpoint

Barrier

- Barrier (complete)
- Planned Barrier
- Planned Barrier (under construction)
- Dismantled Barrier

Barrier Gates

- Currently inaccessible for Palestinians
- Restricted access to Palestinians

Checkpoints

- Permanent Checkpoint
- Partial Checkpoint

Road Network

- Regional or Main Road
- Other Road

Other Symbols

- Palestinian Built-Up Area
- Israeli Settlement

OCCHA

Closure mapping is a work in progress. Closure data is collected by OCHA field staff and is subject to change. Salfit closures completed in April 2004. Maps will be updated regularly.

Cartography: OCHA Humanitarian Information Centre - March 2004
 Base data: PA MoP, July 2000, OCHA update 2003
 For comments contact ochahpi@un.org or Tel. +972 (02) 562-9962
<http://www.ochahpi.org>

