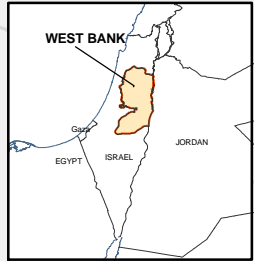


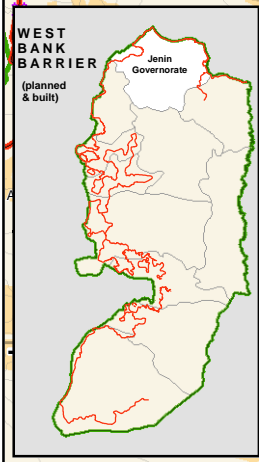
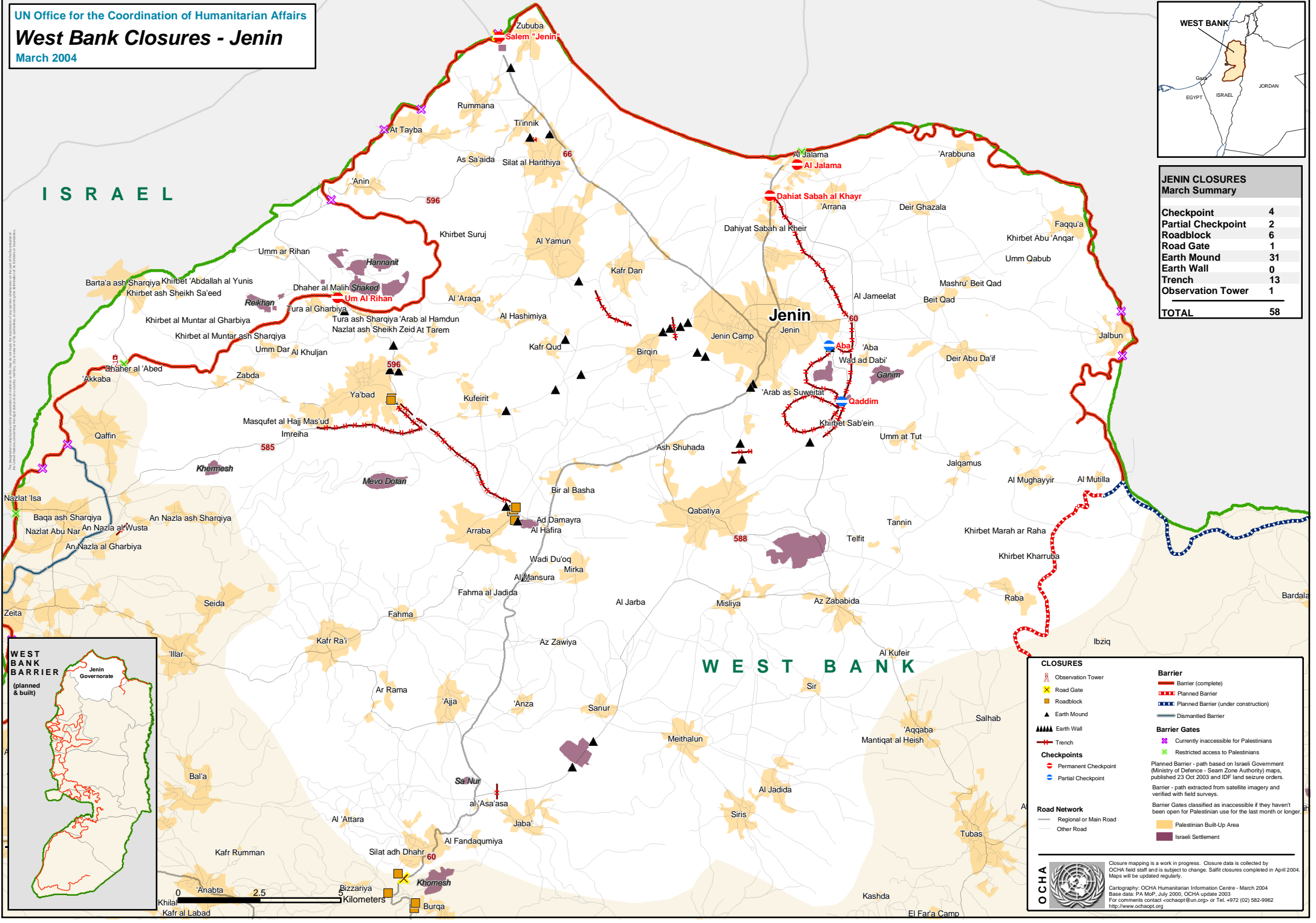
West Bank Closures - Jenin

March 2004



JENIN CLOSURES March Summary

Checkpoint	4
Partial Checkpoint	2
Roadblock	6
Road Gate	1
Earth Mound	31
Earth Wall	0
Trench	13
Observation Tower	1
TOTAL	58



CLOSURES

- Observation Tower
- Road Gate
- Roadblock
- Earth Mound
- Earth Wall
- Trench
- Checkpoint
- Partial Checkpoint

Barrier

- Barrier (complete)
- Planned Barrier
- Planned Barrier (under construction)
- Dismantled Barrier

Barrier Gates

- Currently inaccessible for Palestinians
- Restricted access to Palestinians

Checkpoints

- Permanent Checkpoint
- Partial Checkpoint

Road Network

- Regional or Main Road
- Other Road

Other Symbols

- Palestinian Built-Up Area
- Israeli Settlement

Legend Notes:
 Planned Barrier - path based on Israeli Government (Ministry of Defence - Seam Zone Authority) maps, published 23 Oct 2003 and IDF land seizure orders.
 Barrier - path extracted from satellite imagery and verified with field surveys.
 Barrier Gates classified as inaccessible if they haven't been open for Palestinian use for the last month or longer.

OCHA

Closure mapping is a work in progress. Closure data is collected by OCHA field staff and is subject to change. Staff closures completed in April 2004. Maps will be updated regularly.

Cartography: OCHA Humanitarian Information Centre - March 2004
 Base data: PA MoP, July 2000, OCHA update 2003
 For comments contact ochaapt@un.org or Tel. +972 (02) 582-9962
<http://www.ochaapt.org>

