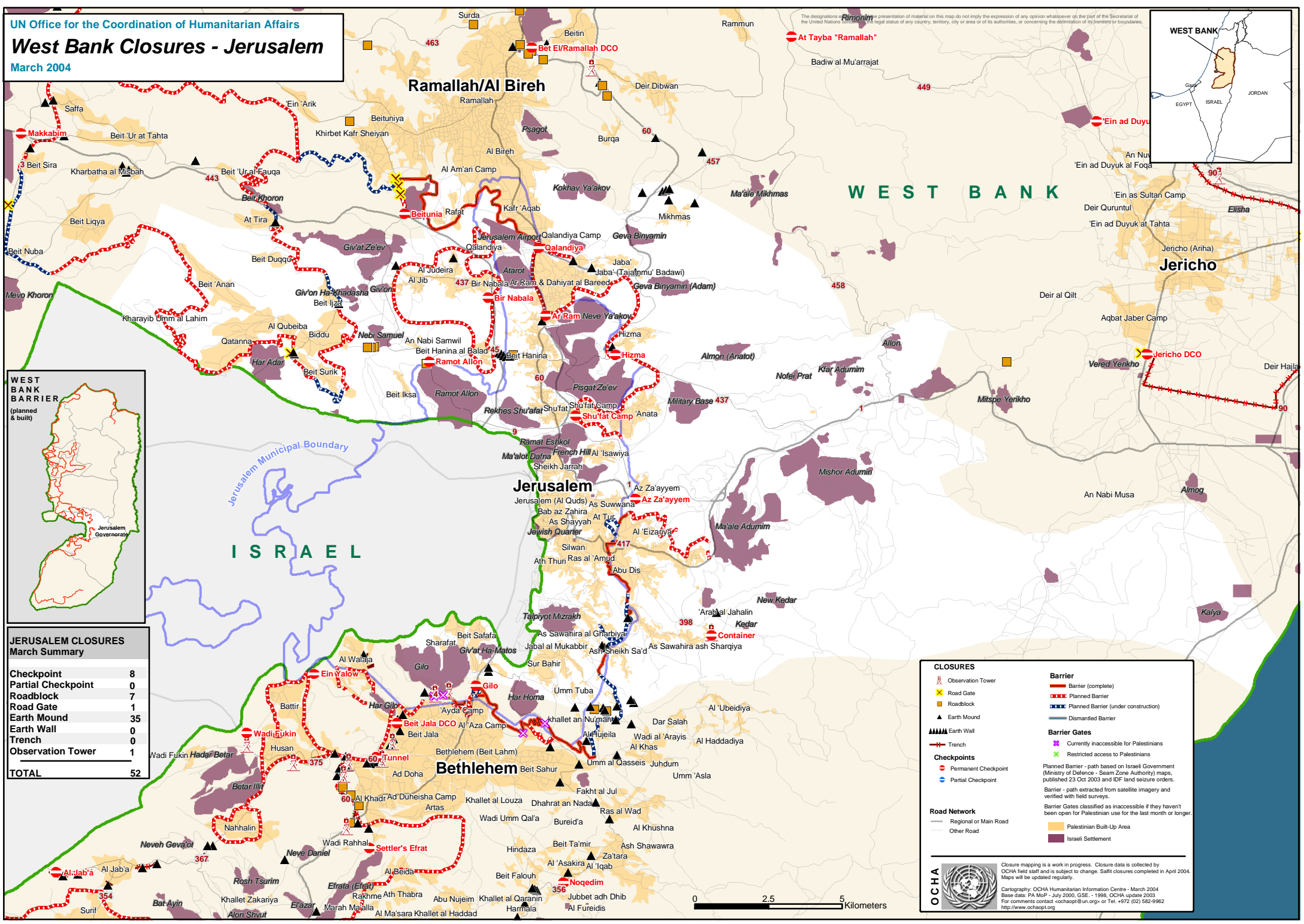
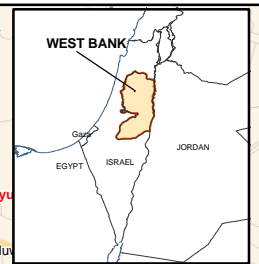


The designations and the presentation of material on this map do not imply the expression of any opinion whatsoever on the part of the Secretariat of the United Nations concerning the legal status of any territory, city or area or of its authorities, or concerning the delimitation of its frontiers or boundaries.



JERUSALEM CLOSURES March Summary

| | |
|--------------------|-----------|
| Checkpoint | 8 |
| Partial Checkpoint | 0 |
| Roadblock | 7 |
| Road Gate | 1 |
| Earth Mound | 35 |
| Earth Wall | 0 |
| Trench | 0 |
| Observation Tower | 1 |
| TOTAL | 52 |

CLOSURES

- Observation Tower
- Road Gate
- Roadblock
- Earth Mound
- Earth Wall
- Trench
- Checkpoint
- Permanent Checkpoint
- Partial Checkpoint

Barrier

- Barrier (complete)
- Planned Barrier
- Planned Barrier (under construction)
- Dismantled Barrier

Barrier Gates

- Currently inaccessible for Palestinians
- Restricted access to Palestinians

Planned Barrier - path based on Israeli Government (Ministry of Defence - Seam Zone Authority) maps, published 23 Oct 2003 and IDF land seizure orders.
 Barrier - path extracted from satellite imagery and verified with field surveys.
 Barrier Gates classified as inaccessible if they haven't been open for Palestinian use for the last month or longer.

Road Network

- Regional or Main Road
- Other Road

Legend

- Palestinian Built-Up Area
- Israeli Settlement

OCHA

Closure mapping is a work in progress. Closure data is collected by OCHA field staff and is subject to change. Satellite closures completed in April 2004. Maps will be updated regularly.

Cartography: OCHA Humanitarian Information Centre - March 2004
 Base data: PA MoP - July 2000, GSE - 1998, OCHA update 2003
 For comments contact: ochaopt@un.org or Tel. +972 (02) 582-9962
<http://www.ochaopt.org>

