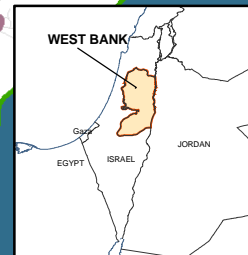
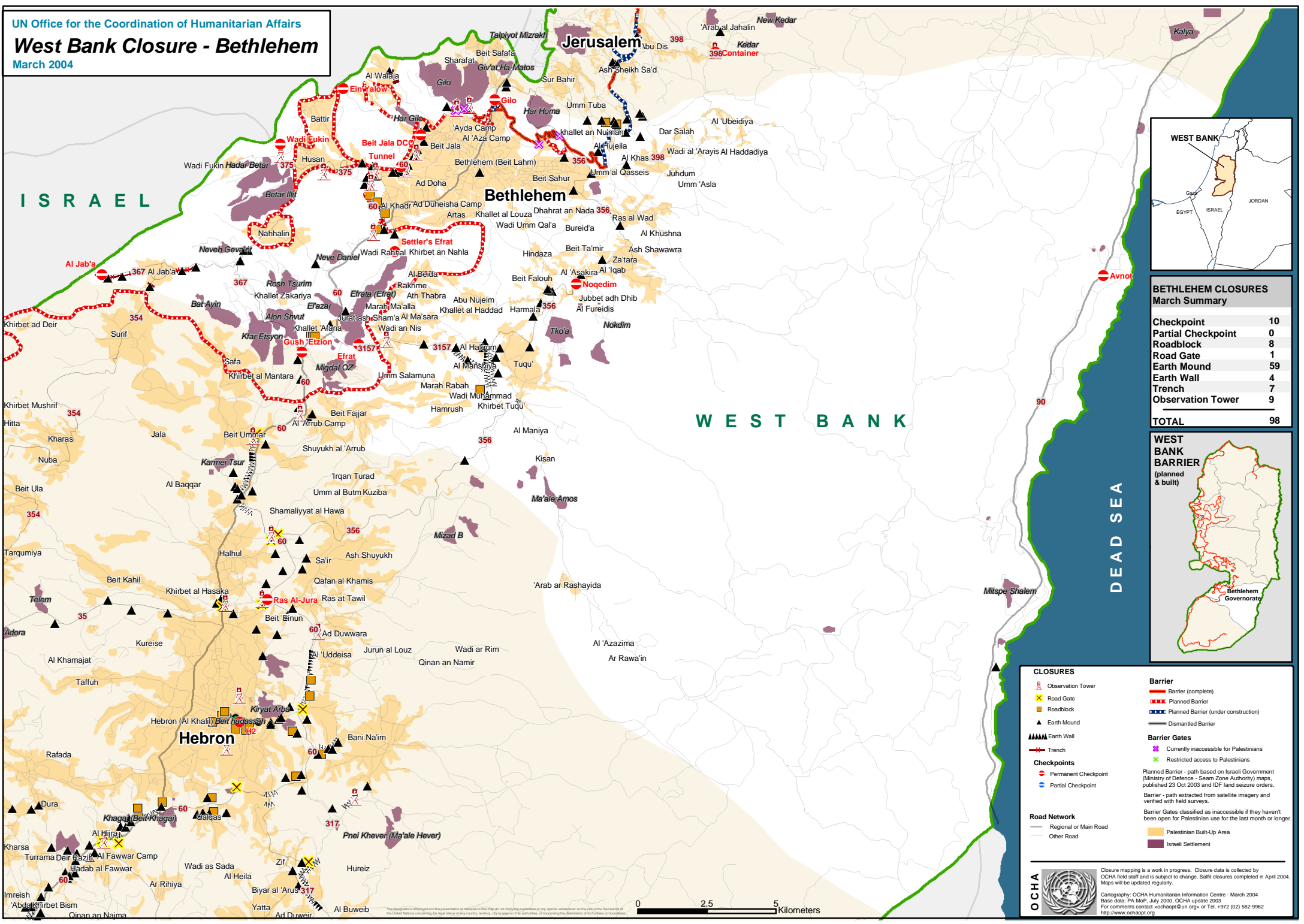


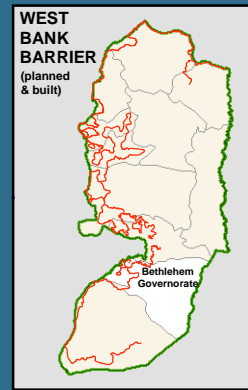
# West Bank Closure - Bethlehem

March 2004



### BETHLEHEM CLOSURES March Summary

Checkpoint	10
Partial Checkpoint	0
Roadblock	8
Road Gate	1
Earth Mound	59
Earth Wall	4
Trench	7
Observation Tower	9
<b>TOTAL</b>	<b>98</b>



### CLOSURES

- Observation Tower
- Road Gate
- Roadblock
- Earth Mound
- Earth Wall
- Trench
- Permanent Checkpoint
- Partial Checkpoint

### Barrier

- Barrier (complete)
- Planned Barrier
- Planned Barrier (under construction)
- Dismantled Barrier

### Barrier Gates

- Currently inaccessible for Palestinians
- Restricted access to Palestinians

Planned Barrier - path based on Israeli Government (Ministry of Defence - Seam Zone Authority) maps, published 23 Oct 2003 and IDF land seizure orders.  
Barrier - path extracted from satellite imagery and verified with field surveys.  
Barrier Gates classified as inaccessible if they haven't been open for Palestinian use for the last month or longer.

### Road Network

- Regional or Main Road
- Other Road

### Other Symbols

- Palestinian Built-Up Area
- Israeli Settlement

