

# Enclaves and Closed Areas between the Wall and the Green Line

United Nations Office for the Coordination of Humanitarian Affairs

8 November 2003

*Preliminary statistics on the Palestinian lands between the Wall and the Green Line (excluding Jerusalem)*

**Total area between the Wall and the Green Line: 210,000 acres**

Enclave area: 57,000 acres  
Closed area: 153,000 acres

14.5% of West Bank land

**Total length of the Wall: 687 km**

Completed: 180 km (including Jerusalem)  
Planned: 507 km (including Jerusalem)

11% of the Wall follows the Green Line  
Length of the Green Line: 315 km

**Total population in Enclaves and Closed Areas**

Palestinians: 274,000  
(122 communities)

Israeli settlers: 142,000  
(54 Israeli settlements)

**Total population in Enclaves**

Palestinians: 257,000  
(58 communities)

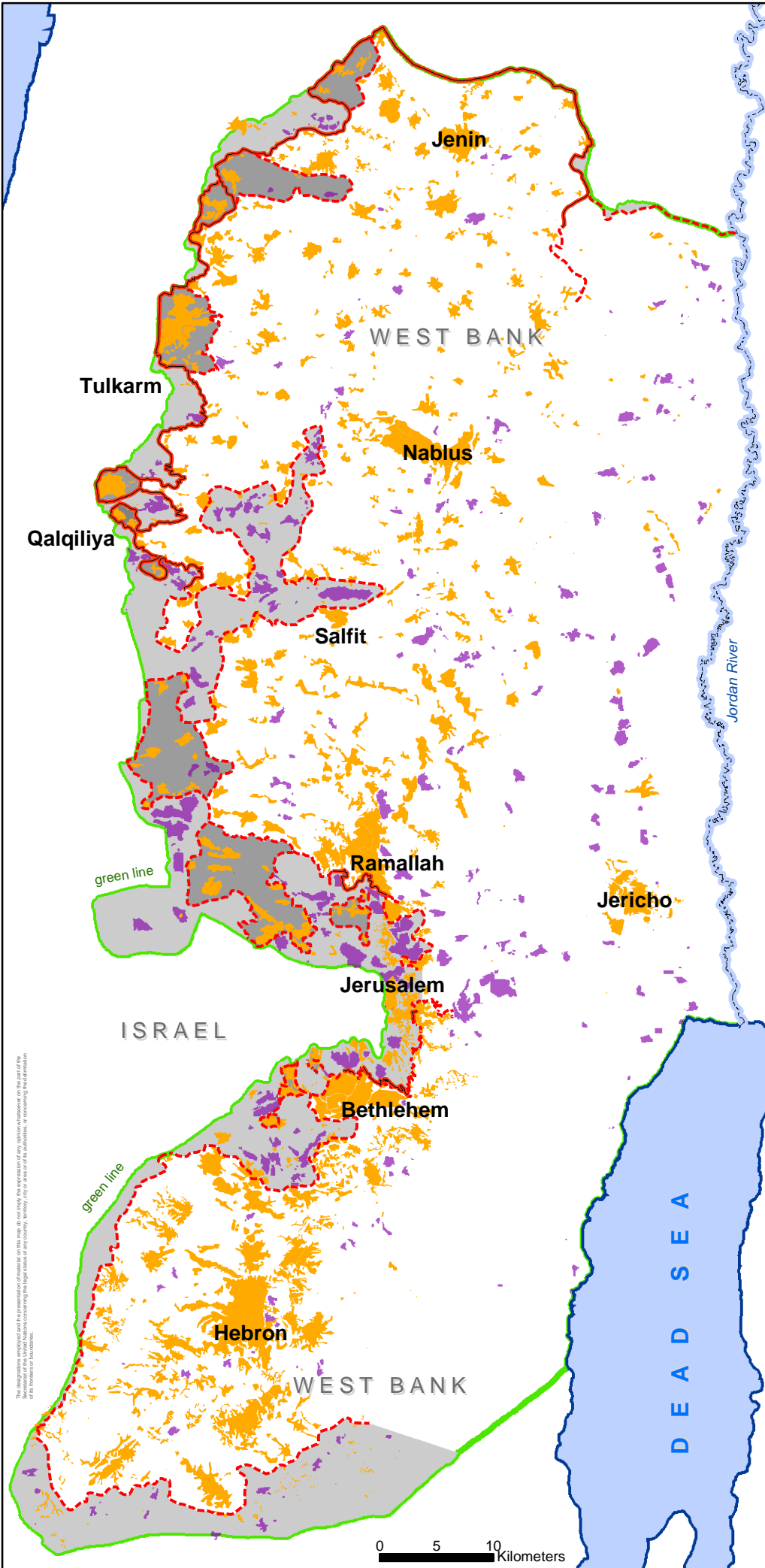
Israeli settlers: 1600  
(4 Israeli settlements)

**Total population in Closed Areas**

Palestinians: 17,000  
(64 communities)

Israeli settlers: 140,400  
(50 Israeli settlements)

PRELIMINARY STATISTICS OF LANDS AND PEOPLE AFFECTED  
\*\*ALL FIGURES ARE ESTIMATES AND ARE SUBJECT TO VALIDATION



- Completed Wall
- - - - - Planned Wall
- Enclave: Area surrounded by the Wall
- Closed Area: Area enclosed by the Wall and the Green Line
- Palestinian Community
- Israeli Settlement

Wall path based on Israeli Government (Ministry of Defence - Seam Zone Authority) Maps, published 23 Oct 2003

The designations employed and the presentation of material on this map do not imply the expression of any opinion whatsoever on the part of the United Nations Secretariat concerning the legal status of any country, territory, city or area or of its authorities, or concerning the delimitation of its frontiers.